

SHORT FORM 2011/2012
FIRE ALARM SYSTEMS



Contents

FIRE ALARM SYSTEMS

PRODUCTS

	Page
System EBL512G3 and EBL128 overview	4
Control & Indicating Equipment (C.i.e.)	
EBL512G3, 5000, 5001	8
EBL128, 4550	10
Display Units	
External presentation units, 1728	10
Alert annunciation units, 1735, 1736	10
External fire brigade panel, 1826	11
External fire brigade panel, 1828	11
Options, Accessories	
Web-server II, 1598	12
Web-server II, S/W WebG3 / Web128	12
Web-server II, OPC512	13
Analog/Addressable Detectors	
Analog base, 3312	14
Analog base, 3312F / FL	14
Analog base with short circuit isolator, 4313	15
Analog heat detector, 3308	15
Enclosed analog heat detector, 3309	16
Analog multi detector, 4300	16
Analog photoelectric smoke detector, 4301	17
Addressable COM Loop Units	
Addressable manual call point, 3333	18
Enclosed addressable manual call point, 3339	18
Addressable multipurpose I/O unit, 3361	19
Addressable 2 voltage outputs unit, 3364	19
External power supply, 3366	20
Addressable siren, 3377	20
Addressable sounder base, 3379	21
Addressable beacon, 4380	21
Conventional Detectors/Units for Zone Line Inputs	
Base, 2324	22
Multi detector, 4350	22
Photoelectric smoke detector, 4352	23
Combination heat detector, 4318	23
Heat detector, 4375 and 4376	24
Enclosed heat detector, 6295, 6296, 6297, 6298	24
Units for hazardous (Ex) areas—EBL512G3	25
Units for hazardous (Ex) areas—EBL128	25
Detector Accessories	
External indicator (LED), 2218	26
Address setting tool, 3314	26
Drip pan for detector, 6218	26
Protective cover for detector, 6360	27
Rope elevator kit, 6362	27
Plate for wire installation, 6363	28
Duct detector chamber, UG-4 6367	28

Fire Alarm Systems EBL512G3 and EBL128

The demands on fire alarm systems are increasing. The system must be on the highest possible alert during the whole day in various activities. The most important task for a fire alarm system is early detection of a fire in order to save lives and property in all kinds of environments. Fires which are difficult to detect such as glowing or smouldering fires have to be quickly and effectively detected.

On the other hand, false alarms should also be reduced to a minimum. This means that the system must have both high sensitivity and a low sensitivity “at the same time”.

The system is also exposed to an increasing number of interferences such as mobile telephones and changes in the surroundings. All these demands require an intelligent system, i.e. both the c.i.e. and the detectors have to be intelligent.



EBL512G3 Control and Indication Equipment



EBL128 Control and Indication Equipment

General

EBL512G3 and EBL128 are analog addressable fire alarm systems which can also be used with addressable detectors, inputs and outputs as well as with conventional detectors. Both fulfill the EN54 standards: EN54 part 2 (Control and indicating equipment) and EN54 part 4 (Power supply).

Detectors, manual call points, and general input and output units for free programmable customer specific functions can be connected to the COM loops. Each loop unit uses one address.

EBL512G3 and EBL128 – a unique concept for early and safe detection without false alarms

EBL512G3 and EBL128 are a new generation of fire alarm systems. With a unique functionality in cooperation with adaptation to the surrounding environment, self-diagnostics and interactivity, the system can be installed in most premises.

- Each analog detector in the system is individually adapted to the surrounding environment. The sensitivity of each analog detector is constant in spite of the individual contamination or background particle level. The long-term changes are, for example, distinguished from the short-term changes of a smouldering fire.
- Intelligent alarm algorithms and a unique self learning algorithm to detect smouldering fires.
- The self-diagnostics function detects every deviation from the accurate normal condition in the electronics and in the detection chamber.

- The interactivity function uses information from one, two or more detectors in the system to increase reliability in detection of a real fire.

- A family of state of the art analog detectors gives the c.i.e. accurate and noise-free information about occurrence of smoke and/or temperature changes in the installation.

A large variety of units can be connected to the COM loop:

- Analog addressable smoke and heat detectors
- Water proof heat detectors
- Addressable manual call points
- Addressable short circuit isolators
- Addressable sirens/sounder bases
- Addressable I/O units, also with monitored voltage outputs
- Addressable power supplies
- Conventional detectors via I/O units

Fire Alarm Systems EBL512G3 and EBL128

The EBL512G3 and EBL128 fire alarm systems have a set of functions that meet the most stringent requirements relating to fire detection and fire prevention measures.

- Service signal is given when a detector is contaminated to a certain level.
- A large number of fire detection algorithms are supported by the system and can be set individually for each analog detector.
- Alert annunciation. The output for the alarm transmitter can be delayed for immediate on-site investigation of a fire alarm.
- Individual detectors, zones, programmable outputs and outputs for the alarm transmitter can be individually disabled.
- Internally and/or externally controlled time channels. E.g. one or more alarm points may be disabled via an external timer.
- User programmable outputs can be programmed in a very flexible way enabling control of sirens, fire doors, extinguishing systems, etc.
- External fire brigade panels can be connected to each c.i.e.
- Display of the actual system status in a PC or Pocket-PC via a web-server connected to an intranet (LAN) or the Internet. In the event of fire alarm, service signal, etc. an e-mail can be sent to the appropriate personnel. Also provides one-way communication to an external computer system.

Planning, commissioning and installation tool WinG3/Win128

Modern fire alarm systems are very complex and versatile. In order to get optimal performance and cost effective planning, installation, commissioning and maintenance of a system, we provide our distributors with a powerful tool. This tool is the Windows based PC software WinG3/Win128, which is a complete support packet for the respective system. All configurations and settings for the system are done in the PC and then downloaded to the respective c.i.e.

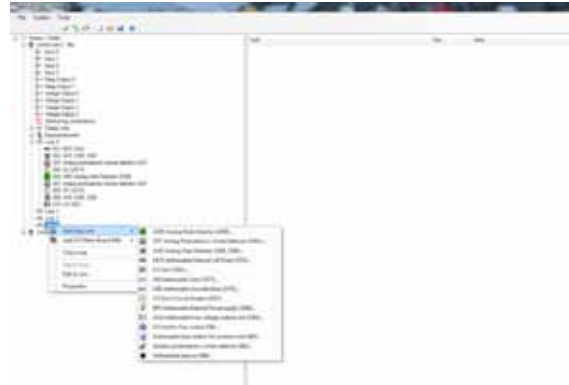


The analog 33xx detectors (left) received a design award at the 1998 Hanover Exhibition.

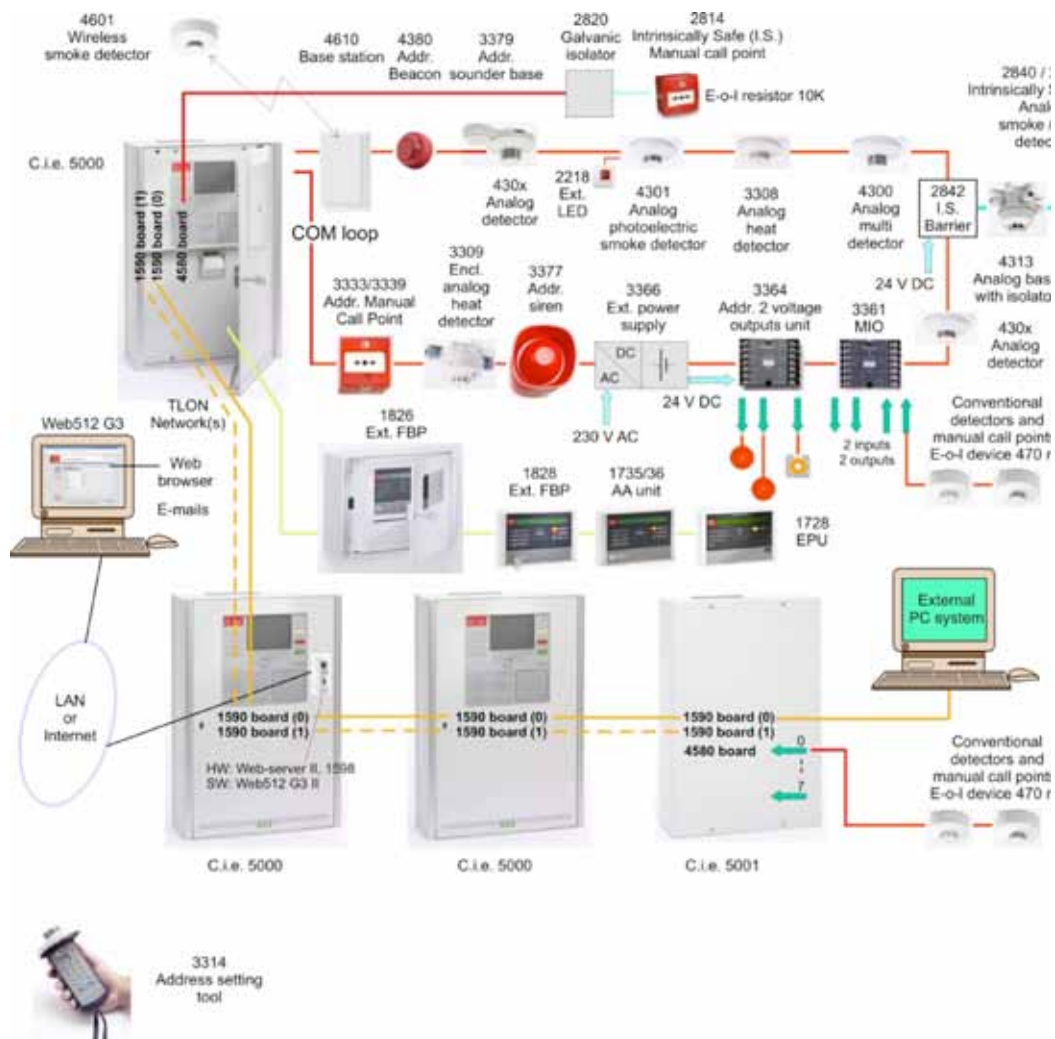
The analog 43xx detectors (right) have an even more attractive and slender design.

Fire alarm system EBL512G3

WinG3 is used when planning an installation. After the planning, the “site specific data” is downloaded to the respective c.i.e. The data can also be uploaded from the c.i.e. WinG3 can also be used to download new software, etc.



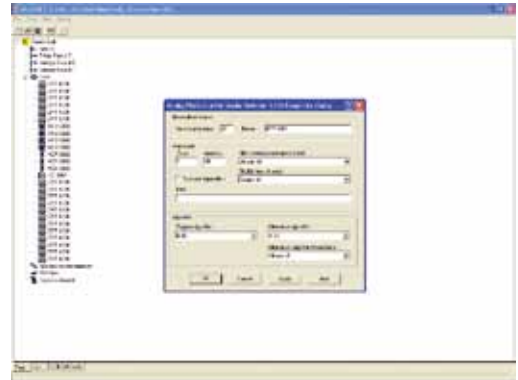
EBL512G3 system overview:



Fire alarm system EBL128

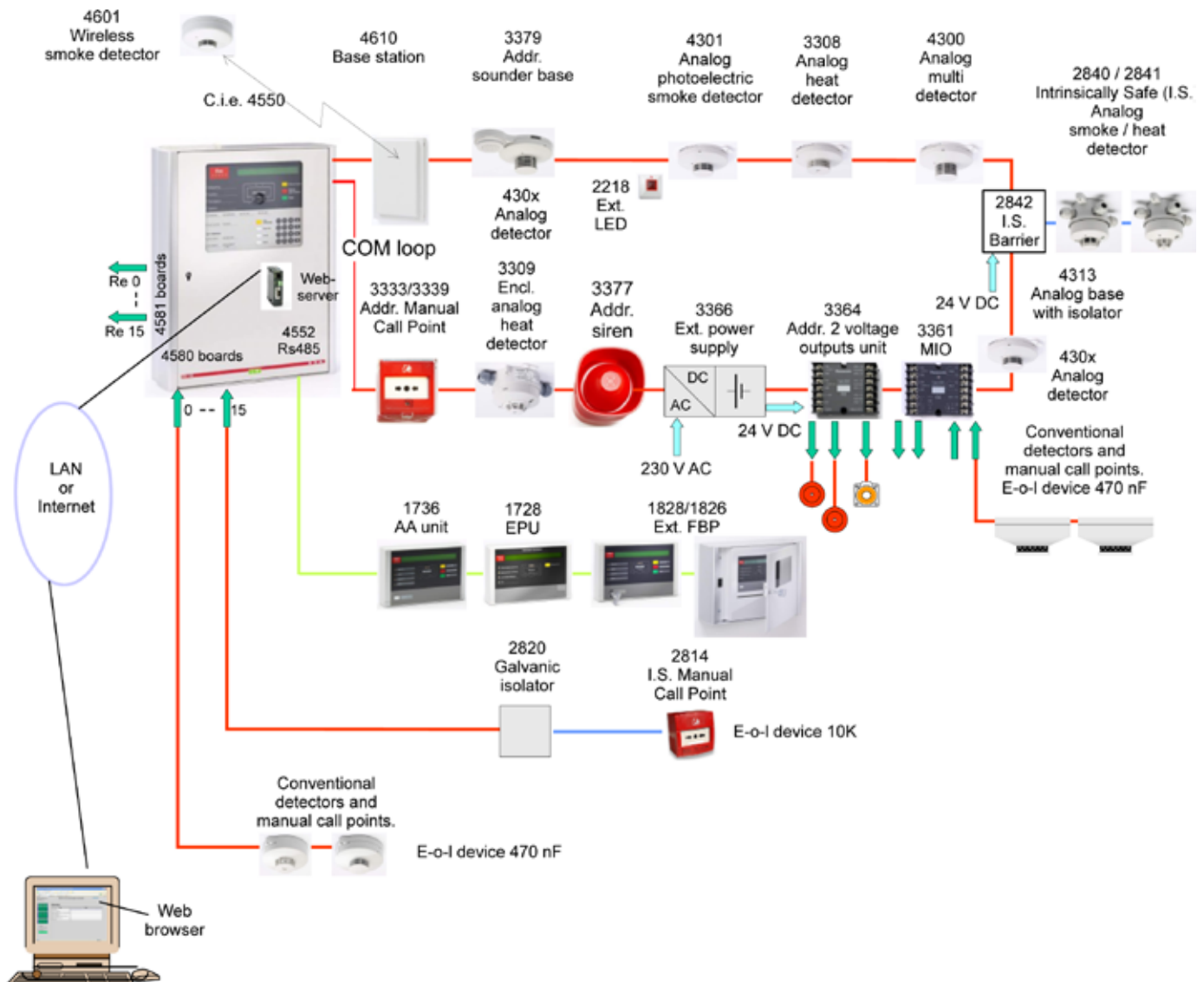
Planning, commissioning and installation tool Win128

Modern fire alarm systems are very complex and versatile. In order to get the optimal performance and cost effective planning, installation, commissioning and maintenance of a system, we provide Win128 – a powerful Windows based PC tool. Win128 is a complete support package for the EBL128 system. All configurations and settings for the system (SSD) are done in the PC and after that downloaded to the c.i.e. For faster and easier commissioning, an“SSD auto generation function” is available.



Win128 is used when planning an installation. After the planning phase the “site specific data” (SSD) is downloaded to the c.i.e. The data can also be uploaded from the c.i.e. Win128 is also used to download new software, etc.

EBL128 system overview:



EBL512G3, 5000, 5001



Features

- **EBL512G3** – the third generation of the intelligent analog addressable system EBL512G3
- Up to **1020** addresses – **512 alarm points** – per control and indicating equipment (c.i.e.)
- **Redundant network** for up to 30 control units with two TLON networks

Type numbers	
5000	EBL512G3 c.i.e. with or without a printer and for 128, 256 or 512 alarm points - depending on the article number. Supplied with a standard mounting plate approved for an incombustible wall (e.g. concrete).
5001	EBL512G3 c.i.e. A "grey box" with no front, no display and no door with plexiglass. 128, 256 or 512 alarm points – depending on the article number. Supplied with a standard mounting plate approved for an incombustible wall (e.g. concrete).
5020	Mounting plate for 19" mounting rack. For one 5000 / 5001.
5021	Mounting plate for inflammable wall (e.g. wood). For one 5000 / 5001.
5059	Paper rolls (spare part for the printer mounted in 5000). Four pieces.
5013	Cabinet for drawings.
4580	8 zones expansion board (8 zone line inputs for conventional detectors).
4581	8 relays expansion board (8 programmable relay outputs).
4583	In- and outputs expansion board. 3 outputs and 5 inputs.
5089	Connection cable for up to six expansion boards (4580-4583).
1590	TLON connection board – required for a TLON network. One board in each c.i.e. NOTE! For redundant network are two 1590 boards required in each c.i.e.



Features

- **EBL128**, an intelligent analog addressable fire alarm system for up to 128 addresses
- Auto generation of the site specific data for easier c.i.e. programming

Type numbers	
4550	EBL128 c.i.e. (128 addresses). Batteries are not included.
4552	RS485 transceiver component, for up to four display units, i.e. external fire brigade panels 1826/1828, external presentation unit 1728 and/or alert annunciation units 1735 / 1736.
4551	Expansion board holder. (For two 4580 and two 4581 expansion boards.)
4580	8 zones expansion board. (Max. two per c.i.e.)
4581	8 relays expansion board. (Max. two per c.i.e.)

The 4580 board can be used to connect conventional detectors and manual call points to EBL128. An end-of-line capacitor (470nF) shall be connected in the last alarm point on each zone line. More information is available in the EBL128 Planning Instructions and Operating Instructions.

External presentation unit 1728



Features

- For presentation of pre-warnings, fire alarms, faults and disablements
- Compact size

Type numbers	
1728	External Presentation unit (S/W V1.2). 1728SE / 1728UK: Designation texts on the front in Swedish / English. NOTE! In Swedish convention (SBF): "General fault" presentation but no buzzer and no "General disablement" presentation.
4552	RS485 Transceiver component / comm. module. (Required in EBL128. SW mode 1826/28 – 1587 only. EBL128 software V≥1.0.5 required.)

Alert annunciation units 1735 and 1736



Features

- Control and indicating unit for alert annunciation
- Compact size

Type numbers	
1735	Alert annunciation unit. <u>Swedish designation texts.</u>
1736	Alert annunciation unit. <u>Designation texts in any language.</u>
4552	RS485 transceiver component, for connection of up to four display units, e.g. Alert Annunciation Units 1735 / 1736 in system EBL128.

External fire brigade panel 1826



Features

- Control and indicating panel for the fire brigade personnel
- Built-in printer (option)

Type numbers	
1826	External Fire Brigade Panel
1835	Printer for External Fire Brigade Panel 1826.
4552	RS485 Transceiver component / comm. module. (Required in EBL128. Only SW mode 1826/28 – 1587 can be used.)

External fire brigade panel 1828



Features

- Control and indicating panel for the fire brigade personnel (key required)
- Indicating panel for all personnel (key not required)
- Compact size

Type numbers	
1828	External Fire Brigade Panel
4552	RS485 Transceiver component/comm. module. (Required in EBL128. Only SW mode 1826/28 – 1587 can be used.)

Web-server II 1598



Features

- Web-server II, 1598; second Web-server generation
- Increased memory and faster CPU
- The same hardware can be used for the functions WebG3, Web128 or OPC512

Type number

1598	Web-server II, incl. cable & accessories kit (The RS232C and power supply cables for systems EBL512G3 and EBL128 are supplied.)
-------------	--

Web-server II S/W WebG3 / Web128



Features

- Software for the Web-server II, 1598
- New screen dump and configuration tools for the function WebG3 and Web128 respectively

Type number

¹⁾	WebG3 Configuration tool for EBL512G3 (Remote control possible.)
¹⁾	Web128 II Configuration tool for EBL128 version ≥ 1.0 .
¹⁾	Web128 II Configuration tool for EBL128 version ≥ 1.1 . (Remote control possible.)
1598	Web-server II, incl. cable & accessories kit (The RS232C and power supply cables for systems EBL512G3 and EBL128 are supplied.)

Web-server II, OPC512



Features

- Software for the Web-server II, 1598
- Configuration tool for the function OPC512

Type number	
¹⁾	OPC512 II Configuration tool for EBL512 version ≥ 2.5.
1598	Web-server II, incl. cable & accessories kit (The RS232C and power supply cables for systems EBL512G3 and EBL128 are supplied.)
AFPS03510D	Panasonic FP OPC Server software and one license.

¹⁾ The configuration tool can be downloaded from our web page. Since the configuration tool is different depending on the EBL software version, there might be different versions to be found on the web page. It is very important that the configuration tool has the same version as the EBL version, i.e. the two first digits (e.g. **2.5.x**).

<http://www.panasonic-fire-security.com>

NOTE! User name and Password are required for software download.

Analog base 3312



Features

- Common base for the different analog detectors
- Easy connections including output for external LED
- Label holder recess

Type numbers	
3312	Analog base
3390	Label holder (100 holders per packet, excluding labels)
3391	Labels for 3390 (10 sheets à 132 labels)

Analog base 3312F / FL



Features

- Common base for the different analog detectors
- Fast connectors
- Label holder recess

Type numbers	
3312F	Analog base with fast connectors (blue) for the COM loop
3312FL	Analog base with fast connectors (blue) for the COM loop and fast connectors (gray) for one ext. LED (e.g. 2218)
3390	Label holder (100 holders per packet, excl. labels)
3391	Labels for 3390 (10 sheets à 132 labels)

Analog base with short circuit isolator 4313



Features

- Common base for the different analog detectors
- Built-in short circuit isolator
- Easy connections incl. output for external LED

Type numbers	
4313	Analog base with isolator
3390	Label holder (100 holders per packet, excl. labels)
3391	Labels for 3390 (10 sheets à 132 labels)

Analog heat detector 3308



Features


- Different modes for compatibility with other EBL systems
- Algorithms for class A1, A2 S or BS

Type numbers	
3308	Analog heat detector

Enclosed analog heat detector 3309



Features

- Different modes for compatibility with other EBL systems/detectors
- Algorithms for class A1, A2 S or BS
-  ATEX compliance
- Waterproof (IP67)

Type numbers	
3309	Enclosed analog heat detector (including connection box, 3 compression glands and gasket)
3390	Label holder (100 holders per packet, excluding labels)
3391	Labels for 3390 (10 sheets à 132 labels)

Analog multi detector 4300



Features

- Constant sensitivity / Service signal at a fixed level of contamination
- New advanced algorithms and functions and yet compatible with older EBL systems

Type number	
4300	Analog multi detector

Analog photoelectric smoke detector 4301



Features

- Constant sensitivity / service signal at a fixed level of contamination
- New advanced algorithms and functions and yet compatible with older EBL systems

Type number	
4301	Analog photoelectric smoke detector

Addressable manual call point 3333



Features

- Attractive design compliant with EN54-11
- Test key for routine testing without breaking the glass element
- Protection against accidental operation

Type numbers	
3333	Addressable manual call point
2347	Replacement glass (10 pcs.)
2348	Replacement polycarbonate cover (10 pcs.)

Enclosed addressable manual call point 3339



Features

- Attractive design compliant with EN54-11. IP rating IP67
- Test key for routine testing without breaking the glass element
- Protection against accidental operation

Type numbers	
3339	Enclosed addressable manual call point
2347	Replacement glass (10 pcs.)
2348	Replacement polycarbonate cover (10 pcs.)

Addressable COM Loop Units

Addressable multipurpose I/O unit 3361



Features

- Two programmable outputs
- Two programmable inputs

Type numbers	
3361	Addressable multipurpose I/O unit (including plastic protection cover).
3362	Waterproof box (IP66/67) (including four compression glands).
3363	DIN rail interface kit, for symmetric 35mm DIN rail (plate, clamp and screws)

Addressable 2 voltage outputs unit 3364



Features

- Two programmable supervised voltage outputs
- A special fire door closing voltage output

Type numbers	
3364	Addressable 2 voltage outputs unit (including plastic protection cover and two 470nF capacitors).
3362	Waterproof box (IP66/67) (including four compression glands).
3363	DIN rail interface kit, for symmetric 35mm DIN rail (plate, clamp and screws)
XXXX	10 pieces of 470nF capacitors for the supervised outputs.
3366	External power supply. (230V AC/24V DC, 2.2 alt. 0.85A)

Addressable COM Loop Units

External power supply 3366



Features

- Connected to a COM loop.
- Monitored from the c.i.e.
- Space for batteries inside the housing.

Type number	
3366	External power supply (batteries are not included)

Addressable siren 3377



Features

- High sound output but low current consumption
- Three different tones and priority levels
- Connected directly on the COM loop

Type number	
3377	Addressable siren

Addressable COM Loop Units

Addressable sounder base 3379



Features

- High or low sound output
- Three different tones and priority levels
- Connected directly on the COM loop

Type number	
3379	Addressable sounder base (sounder and a special version of analog base 3312)

Addressable beacon 4380



Features

- Low current consumption thanks to LED technology
- Shallow (20 mm) or deep (50 mm) base
- Connected directly on the COM loop

Type number	
4380	Addressable beacon with shallow (S) base
4382	Deep (D) base for 4380

Conventional Detectors/Units for Zone Line Inputs

Base 2324



Features

- Common base for the different conventional detectors
- Easy connections incl. output for external LED
- Locking mechanism

Type number	
2324	Base (for conventional detectors)

Multi detector 4350



Features

- Low profile design/unleaded soldering/latest IC technology
- One detector housing, two detector types and AI function

Type number	
4350	Multi detector

Photoelectric smoke detector 4352



Features

- Low profile design
- Latest IC technology / highest reliability
- Unleaded soldering

Type number	
4352	Photoelectric smoke detector

Combination heat detector 4318



Features

- Conventional heat detector
- Rate-of-rise and fixed temperature alarm levels

Type numbers	
4318	Combination heat detector

Heat detectors 4375 and 4376



Features


- Conventional heat detector
- Fixed temperature (static) alarm level

Type numbers	
4375	Heat detector, 60°C, class A2 S.
4376	Heat detector, 80°C, class B S.

Enclosed heat detectors 6295, 6296, 6297, 6298



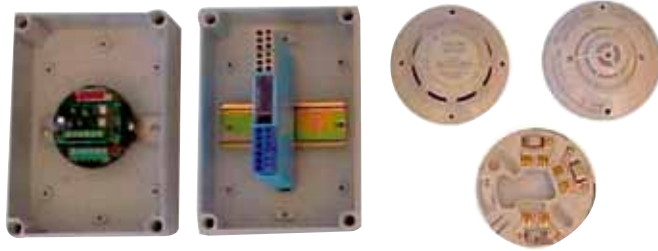
Features

- Fixed temperature alarm level
-  ATEX compliance
- Waterproof (IP67)

Type numbers	
6295	Enclosed heat detector, 57°C, class A2 S (54 to 70°C).
6296	Enclosed heat detector, 72°C, class B S (69 to 85°C).
6297	Enclosed heat detector, 87°C, class C S (84 to 100°C).
6298	Enclosed heat detector, 117°C, class E S (114 to 130°C).
3390	Label holder (100 holders per packet, excluding labels).
3391	Labels for 3390 (10 sheets à 132 labels)

Conventional Detectors/Units for Zone Line Inputs

Units for hazardous (Ex) areas–EBL512G3



Features

- Approved Intrinsically Safe interface, isolator and detectors

Type numbers	
2821	Addressable IS zone interface (including waterproof box and four compression glands)
MTL5061	Galvanic isolator (including waterproof box and four compression glands) (2820)
YBN-R/4IS	Intrinsically safe mounting base (2812)
SLR-E-IS	Intrinsically safe photoelectric smoke detector (2810)
DCD-1E-IS	Intrinsically safe heat detector (2811)
MCP1A-R470SGIS	Intrinsically safe manual call point (incl. back-box & a transparent protection flap) (2814)

Units for hazardous (Ex) areas–EBL128



Features

- Approved isolator and Intrinsically Safe detectors for conventional zone line input

Type numbers	
MTL5061	Galvanic isolator (including waterproof box and four compression glands) (2820)
YBN-R/4IS	Intrinsically safe mounting base (2812)
SLR-E-IS	Intrinsically safe photoelectric smoke detector (2810)
DCD-1E-IS	Intrinsically safe heat detector (2811)

External indicator (LED) 2218



Features

- Symbol instead of text
- One indicator for all detector types

Type number	
2218	External indicator (LED)

Address setting tool 3314



Feature

- Used for address and mode setting

Type numbers	
3314	Address setting tool (including 3315)
3315	Connection cable for address setting tool 3314

Drip pan for detector 6218



Feature

- Protection against damp/moisture

Type number	
6218	Drip pan for detector

Protective cover for detector 6360



Features

- Protection against physical damage
- Protection against theft

Type number	
6360	Protective cover for detector

Rope elevator kit 6362

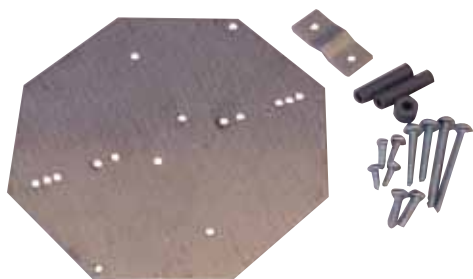


Feature

- A kit with all the necessary pieces for a rope elevator.

Type number	
6362	Rope elevator kit (Detector and base are <u>not included.</u>)

Plate for wire installation 6363



Feature

- A kit for wire installation with all the necessary pieces for all kinds of detectors

Type number	
6363	Plate for wire installation. (Detector and base are <u>not included</u> .)

Duct detector chamber UG-4 6377



Features

- Patented venturi pipe and duct housing – only one pipe is required
- User friendly installation
- For conventional as well as analog and addressable systems
- Pipe with a built-in fan is available

Type numbers	
6377	UG-4 duct detector chamber – incl. standard mounting accessories. (NOTE! Detector & base have to be ordered separately.)
6380-06	UG-4 pipe 0.6 m.
6380-15	UG-4 pipe 1.5 m – incl. plastic end gasket and rubber gasket TET 26-35.
6380-28	UG-4 pipe 2.8 m – incl. plastic end gasket and rubber gasket TET 26-35.
6381-06 ¹⁾	UG-4 pipe 0.6 m with built-in fan. (Ext. 24 V AC required.)
6381-15 ¹⁾	UG-4 pipe 1.5 m with built-in fan – incl. plastic end gasket and rubber gasket TET 26-35.) (Ext. 24 V AC required.)
6381-28 ¹⁾	UG-4 pipe 2.8 m with built-in fan – incl. plastic end gasket and rubber gasket TET 26-35.) (Ext. 24 V AC required.)
6382 ¹⁾	UG-4 bracket
6384	UG-4 filter (10 pieces)
6385	UG-4 rubber gasket TET 26-35 (spare part)

¹⁾ The UG-4 bracket 6382 is required for the mounting of 6377 when a pipe with fan (6381-xx) is used.

North America

Europe

Asia Pacific

China

Japan

Panasonic Electric Works

Please contact our sales offices in:

Europe

▶ Headquarters	Panasonic Electric Works Europe AG	Rudolf-Diesel-Ring 2, 83607 Holzkirchen, Tel. (08024) 648-0, Fax (08024) 648-111, www.panasonic-electric-works.com
▶ Nordic Countries	Panasonic Electric Works Nordic AB	Jungmansgatan 12, 21119 Malmö, Tel. (040) 6977000, Fax (040) 6977099, www.panasonic-fire-security.com

Asia

▶ India	Panasonic Electric Works Asia Pacific Pte. Ltd. India Branch	6F Meridien Commercial Tower 8, Windsor Place, New Delhi 110-001, India Tel: +91-11-2-373-8648, Fax: +91-11-2-373-8650
▶ Indonesia	PT. Panasonic Electric Works Gobel Sales Indonesia	Summitmas I, 8th Floor, Jl. Jend. Sudirman Kav. 61-62, Jakarta 12190, Indonesia Tel: +62-21-252-1616, Fax: +62-21-252-1686
▶ Malaysia	Panasonic Electric Works Malaysia Sdn. Bhd.	Lot W705, 7th Floor West Tower, Wisma Conspant 1, No. 2, Jalan SS 16/4, Subang Jaya, 47500 Petaling Jaya, Selangor Darul Ehsan, Malaysia, Tel: +60-3-5631-8608, Fax: +60-3-5631-8615
▶ Philippines	Panasonic Electric Works Sales Philippines Corporation	14F, 6788 Ayala Avenue, Makati City, Philippines Tel: +632-886-6291, Fax: +632-886-6295
▶ Singapore	Panasonic Electric Works Asia Pacific Pte. Ltd.	101 Thomson Road, #25-03/05 United Square, Singapore 307591, Tel: +65-6255-5473, Fax: +65-6253-5689
▶ Thailand	Panasonic Electric Works Sales (Thailand) Co., Ltd.	18th Floor, Silom Complex Bldg., 191 Silom Road, Bangrak, Bangkok 10500, Thailand, Tel: +66-2-231-3683 Fax: +66-2-231-3688
▶ Vietnam	Panasonic Electric Works Asia Pacific Pte. Ltd. Vietnam Representative Office	8-E, O.S.I.C. Bldg., 8 Nguyen Hue Blvd, Dist 1, Ho Chi Minh City, Vietnam Tel: +84-8-825-8025, Fax: +84-8-825-8026

Middle East

▶ Turkey	Panasonic Electric Works Sales Middle East FZE. Turkey Liaison Office	Perdemsac Plaza, Bayer Cad. Gulbahar Sok. No: 17/99, Kozyatagi, 34742 / Istanbul, Turkey Tel: +90-216-416-3165, Fax: +90-216-416-3552
▶ UAE	Panasonic Electric Works Sales Middle East FZE.	P.O. Box 16910, LOB 15112, Jebel Ali Free Zone, Dubai, U.A.E., Tel: +971-4-881-7418, Fax: +971-4-881-7426